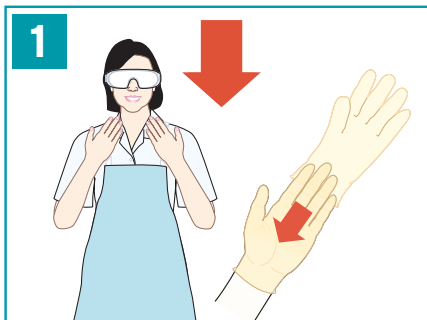


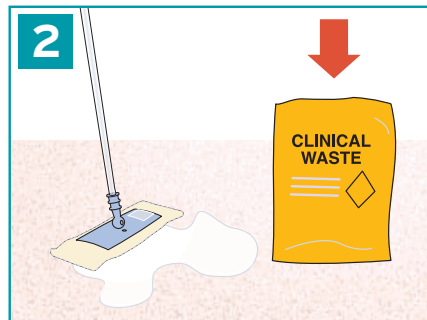
ASEPTI ACTIVE WIPES AND LIQUID

GENERAL ENVIRONMENT

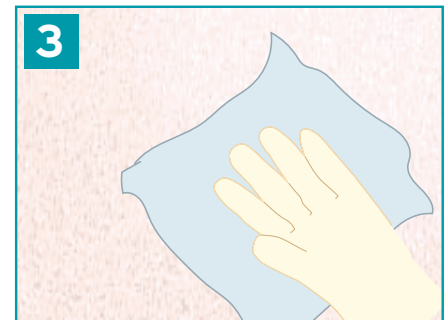
DISINFECTS AND CLEANS IN ONE EASY STEP



1 Wear gloves and additional PPE where required. Avoid direct skin contact.



2 Remove gross contamination before using Asepti Active to clean and disinfect.

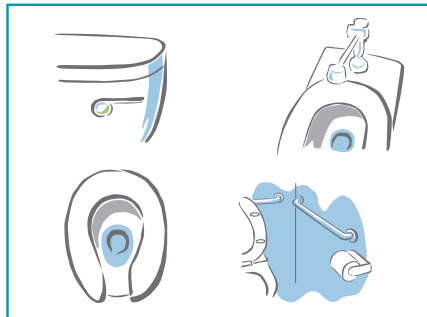


3 To treat surfaces apply Asepti Active Liquid to clean lint free cloth or wipe with Asepti Active Wipe. Remove all visible soil. Use continuous wiping motion to provide uniform coverage to the target surface. Use additional wipes or product where required.

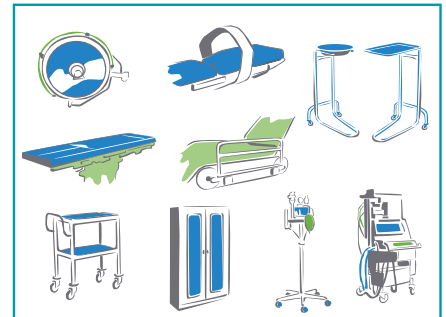
SUITABLE FOR THE FOLLOWING SURFACES



Patient Room / Ward Areas



Patient bathrooms / public bathrooms



Operating Room, ICU, Emergency Department, Central Sterile Department

ASEPTI ACTIVE LIQUID AND WIPES: APPLICATION

Environmental Situation	Treatable Surfaces	Contact Time / Rinse
VRE or MRSA Outbreak	Infectious rooms - all high frequency touch surfaces in the patient room and patient bathroom. Ward areas - all table tops, benches, counters, keyboards, in nursing stations, reception areas. External surfaces of soap dispensers. Public areas - all hard surfaces.	Contact time 5 minutes Rinsing not required
Viral Outbreak. Human coronavirus, COVID19 [SARS-CoV-2], Influenza A	Infectious rooms - all high frequency touch surfaces in the patient room and patient bathroom. Ward areas - all table tops, benches, counters, keyboards, in nursing stations, reception areas. External surfaces of soap dispensers. Public areas - all hard surfaces.	Contact time 5 minutes for clean surfaces. 10 minutes for dirty surfaces. Rinsing not required.
Patient room / bathroom / ward areas	Bed rails, call buttons, over bed tables, trolleys, benches, hand rails, handles, doors, light switches, chairs, toilets, sinks, taps & fixtures. All table tops, benches, counters, key boards, in nurses stations, reception areas. External surfaces of soap dispensers.	For broad spectrum antibacterial efficacy. Contact Time 8 minutes Rinsing not required
Central Sterile Department	Bench tops, stainless steel fixtures, sinks, trolleys, tap fittings. External stainless steel surfaces of batch washers, index washers and trolley washers. Rack carts and loaders.	For broad spectrum antibacterial efficacy. Contact Time 8 minutes Rinsing not required
Intensive care units, Emergency departments and operating theatres	Clean and disinfect operating theatre, ICU and ED equipment including: operating table, bed frames, mattresses, trolleys, stands, monitors [excluding screens] and keyboards, power leads and cables.	For broad spectrum antibacterial efficacy. Contact Time 8 minutes DO NOT RINSE
Minor Blood Spills	Ideal for wiping, cleaning and disinfecting minor blood spills. Ensure surface is physically clean. For larger spills of blood or body fluids please refer to Actichlor Plus cleaning method.	For broad spectrum antibacterial efficacy. Contact Time 8 minutes Rinsing not required
Public Areas	Door handles, push pads, lift buttons, hand rails, tables, public toilet areas, sinks, external surfaces of soap dispensers.	For broad spectrum antibacterial efficacy. Contact Time 8 minutes Rinsing not required